



THE LUXURY TRAVELLING LOO COMPANY

MODUVAC® Vacuum/ Mains Loo System Zebrano External Modules



The External Modules sit on floor level and can be positioned either outside or inside a structure with only a small step up into them.

- The hand basin units are white porcelain in a contemporary square shape mounted on the counter top with elegant, chrome, mixer lever taps.
- The counter tops are made with a Zebrano finish.
- The flooring is wood effect design.
- The Zebrano cubicle doors are designed floor to ceiling to create a sleek style easy to clean and maintain.
- The units are either connected to the mains drainage and water supplies or operate using vacuum technology. In either case there is no requirement for chemical. If the units are operating using the vacuum system they require waste tanks; these can be situated inside the structure but are more usually sited outside.

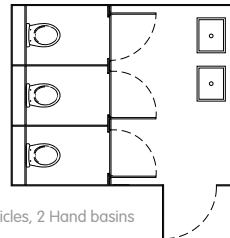
Requirements for Operation

- Equipment is delivered on an articulated lorry so access should be ensured for the vehicle and forklift access into position.
- Constant power supply is required for installation and during the event, quantity varies according to the level of stock.
- Constant fresh water supply with good pressure for installation and during the event. The fresh water is necessary for both the hand basins and loo pans.

Accessories

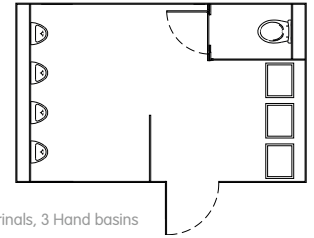
- Consumables – Scottish Fine Soaps and Hand Lotion, loo paper and paper hand towels are supplied as standard.

MODUVAC® Layouts



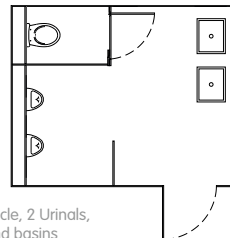
3 Cubicles, 2 Hand basins

Measures
10'0" (3.05m) length
8'0" (2.44m) width
7'4" (2.24m) height



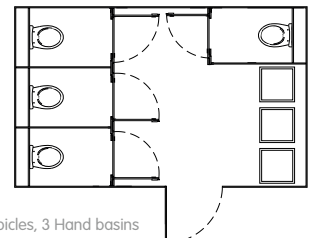
1 Cubicle, 4 Urinals, 3 Hand basins

Measures
13'0" (3.95m) length
8'0" (2.44m) width
7'4" (2.24m) height



1 Cubicle, 2 Urinals,
2 Hand basins

Measures
10'0" (3.05m) length
8'0" (2.44m) width
7'4" (2.24m) height



4 Cubicles, 3 Hand basins

Measures
13'0" (3.95m) length
8'0" (2.44m) width
7'4" (2.24m) height

...beautiful loos ...beautiful events